



## Highcliffe School Student Bulletin

Monday 17<sup>th</sup> -21<sup>st</sup> October: Week B

### General Notices



#### **Rotary Shoebox Appeal (MYP)**

This week in assemblies you will be asked to take part in this year's **Christmas Shoebox Appeal**, organized by Rotary International. It is a simple and effective way

of making a child's Christmas happier than it would have been this year. All you have to do is wrap a shoebox in Christmas paper and fill it with suitable small gifts. All students will be given a letter and leaflet giving all the details.

The deadline for bringing into school completed boxes is **Wednesday 2<sup>nd</sup> November**. Please take part – the more of us who make up boxes, the more children we can help!



#### **Mufti Day (MYP)**

On Friday 21<sup>st</sup> October we will be holding a mufti day to raise money for Stand Up to Cancer (SU2C), a national charity that supports research teams in the UK looking to develop new treatments for cancer. Please visit their website to find out more about their work: [www.standuptocancer.org.uk](http://www.standuptocancer.org.uk).

As part of the 'Mufti Day', you are also invited to wear the most colourful socks that you can find. This is to support Mosaic, a Dorset wide Charity offering a pathway of support for bereaved children and young people. Mosaic's 'Crazy Sock Day' aims to raise money to support their work. You can find out more about Mosaic by visiting their website: [www.mosaicfamilysupport.org.uk](http://www.mosaicfamilysupport.org.uk).

#### **Winter Fair Raffle Tickets (JHG/KGG)**

Please remember to return all completed ticket stubs and money to the finance office in the envelope with your name and tutor group on it. If you would like some more tickets to sell please go to student support or email [friends@highcliffeschool.com](mailto:friends@highcliffeschool.com) with your name and tutor group.

#### **Twilight Languages (SBS)**

Our Twilight Languages programme started this week, but it is *not* too late to enrol. The courses offered are "Talk French", for learners with little or no knowledge of French (on Tuesdays 3:30pm to 4:30pm), "French Intermediate", for those who have already grasped the basics of French (on Wednesdays 3:30pm to 4:30pm) and Japanese, which offers a fascinating insight into the Japanese language, writing system and culture (on Tuesdays 3:30pm to 4:30pm).

Please contact Mr Barnes, Mrs Walton or Mr Bryden on 01425 273381 for more information, or simply come along to the lessons and enrol when you arrive. The cost is £60 for adults (Highcliffe School staff no charge) and no charge for under 18s.

## Year 8 Accelerated Reader News (MHY)



### **Congratulations to Mieszko Biela 8.3!**

Mieszko is the first student to achieve the Millionaire Challenge. As of today the number of words he has read, as part of the challenge, are **1,004,477!**

This challenge is for the whole academic year, so to achieve this, before the end of the first half-term, is outstanding.

I wonder what his final total will be? At this rate, possibly 6 or 7 million?

## Music

### **Music Clubs**

Our music clubs are open to all year groups.

	<b>Lunch</b>	<b>After school</b>
<b>Tuesday</b>	Woodwind <b>Ex3</b>	Production
<b>Wednesday</b>	Theory <b>Ex5</b>	Choir + Choir Band <b>Ex3</b>
<b>Thursday</b>	Ukulele + Guitar <b>Ex2</b>	Cubase/Coursework <b>Ex5</b> Concert Band <b>Ex3</b> (Grade 3 and above)
<b>Friday</b>	Jammin' Club <b>Ex2</b>	Staff Choir <b>Ex5</b>

### **Little Shop of Horrors Rehearsals**

<b>Date</b>	<b>Scene/Actors</b>	<b>Songs</b>	<b>Dance</b>	<b>Band</b>
18 <sup>th</sup> October	SETTING ACT ONE SCENE 1 (Page 13-28)  Audrey Seymour Mushnik Ronnette's Chorus Customer	Little Shop of Horrors  Skid Row  Da Doo	Little Shop of Horrors  Skid Row	2.Skid Row  2a. Skid Row Playoff  3.Da Doo

**Whole-School Literacy**

**The week of the colon (to introduce a list)**

**Are you using a colon to introduce a list?**

**Here are some examples:**

- Erosion is caused by three main factors: wind, rain and the sea.
- To complete a science experiment safely, we need the following equipment:
- We used the following ingredients:
- To calculate the value of X, we used the following procedure:  
1. ....
- There were a number of factors behind the English victory over the French at the Battle of Agincourt: the use of well-trained long-bowmen; the muddy terrain; and the tactics used to draw the French into battle.
- There are three problems with this plan: the cost, the timing, and the location.

In your work, use a colon to introduce a list-then check your work!

**“If it’s not proof-read, it’s not finished!”**

# My Help Live



**Extended Learning Time in our Learning Centres**

**Break and Lunchtime**

Monday-Friday

LS1 11.00-11.20am  
LS1 13.30-13.55pm  
IT2 13.30-13.55pm

**After School**

Monday-Thursday

Library 3.05-4.00pm  
IT2 3.05-4.00pm

## PE Notices

<b>FIXTURES/PRACTICES 17<sup>th</sup> -21<sup>st</sup> October</b>		
	<b>LUNCHTIME (1.25-1.55pm)</b>	<b>AFTER SCHOOL (3.05-4.10pm)</b>
Monday	Year 9 Basketball Club (SHM)	Year 8 Football v Broadstone Middle (A) (NJS) KO 2.30pm
Tuesday	Years 10 & 11 Basketball Club (NJS) Year 7 Girls Rugby Club (WES)	Year 11 Football v Grange (A) (NJS) Year 9 Footballs v Grange (H) (JSS) Year 7 & 8 Netball v Twynham (A) (HWH/MWR)
Wednesday		Year 9 Football Club (JSS) Table Tennis Club – All years (NJS) Year 7 & 8 Netball Club (HWH) Year 8/9 Rugby Club (JDN) Year 7 Football v Grange (A) (SHM) Year 12/13 Rugby v St Peters (H) (JDN) Year 9 Area Netball Tournament @ Twynham (MWR) Leave 1.30pm U15 Girls Football v Arnewood (A) (CFM)
Thursday	Year 7 Basketball Club (NJS)	Year 7 Rugby Club (JDN) All Years Girls Football (CFM & HWH) Year 8 Football v Grange (H) (NJS) Year 10 Football v TBA (A) (SHM) Year 7 Girls Football v Poole High (H) (CFM) Year 9/10/11 Netball v Glenmoor (A) (MWR)
Friday	Year 8 Basketball Club (SHM)	

## Clubs and Revision Sessions

### **Biology Support sessions (RCN)**

A level Biologists are encouraged to check their email as there are a range of support sessions that are now ongoing for year 12 and year 13. Details of these have been sent to all A level classes. Please contact Mr Craven in SC12 if there are any questions regarding these.

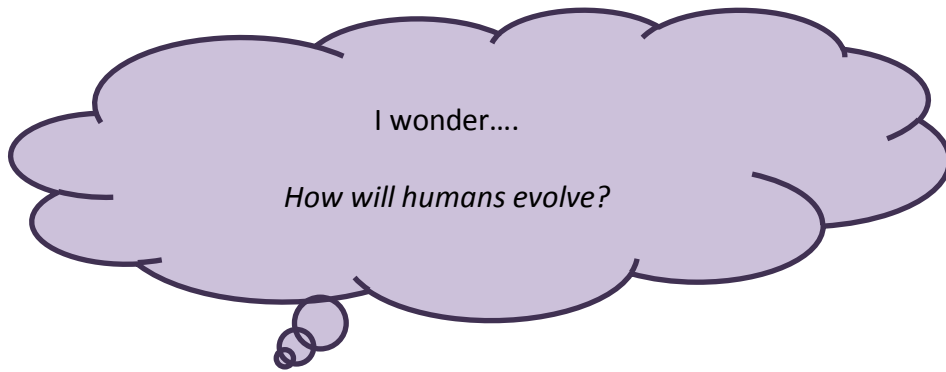
### **Eco club (RCN)**

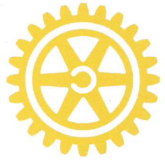
Eco club 2016 is up and running! We have started to clear the garden from last year in preparation for the next growing season. The Eco club meets every Thursday after school until 16:00. We meet in the garden if weather is clear, SC12 if it is wet! All lower school students are welcome to attend and learn how to grow their own food. Suitable outdoor clothing is essential and suitable footwear (wellington boots) highly recommended.



**STEM CLIPPINGS (PES)**

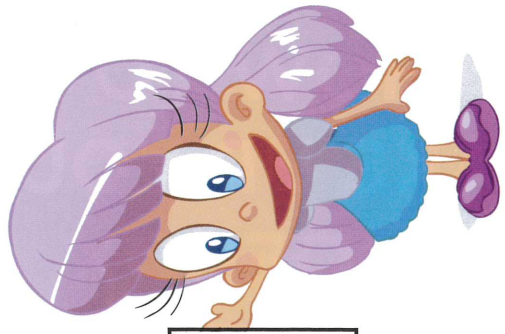
Amazing inventions come in all shapes and sizes and some improve our lives massively! Thank you to Ruth Wakefield who invented chocolate chips in 1938!!





**Rotary**  
DISTRICT  
1110

ROTARY  
CLUB OF



A present with love from

Please circle who the shoebox is intended for

**BOY** 1-3 4-7 8-11 12-15 **GIRL**

PLEASE STICK THIS LABEL AND YOUR DONATION TO THE TOP OF THE SHOEBOX  
All monies collected will be held in the Trust's general account



# Rotary

Rotary is a worldwide voluntary organisation of business and professional people who are dedicated to “*service above self*”, helping others throughout the world, promoting all that is good in our society and world peace.

Rotary has no religious or political affiliations.

There are over one million Rotarians in over 32,000 Clubs in 200 countries worldwide.

If you like having fun and helping other people at the same time, why not find out more about Rotary?

Visit: [www.rotary1110.org.uk](http://www.rotary1110.org.uk)

**THANK YOU FOR YOUR SUPPORT**

# Rotary



**For disadvantaged children in Albania, Montenegro, Moldova and the Philippines**

**DISTRICT 1110 SHOEBOX SCHEME**  
(Rotary District 1110 Trust fund) Reg Charity No 1064463

For more information contact:

LOCAL CONTACT: **RTN. BILL BAKER**

TELEPHONE: **01425 272474**

FINAL DATE FOR RECEIPT OF SHOEBOXES:

**05 NOV 2015**

## AGE 1 - 3 YEARS (Boy or girl)

### CONTENTS - choose from:

Small soft toy, picture book, hat, gloves, socks, soap, hairbrush, flannel, toothbrush and toothpaste, plus any other suitable small items.

## AGE 4 - 7 YEARS (Boy or girl)

### CONTENTS - choose from:

Educational book and game, simple jigsaw, ball, lego, crayons and colouring book, hat, gloves, scarf, socks, soap, hairbrush, flannel, toothbrush and toothpaste, toy vehicle, small doll, skipping rope.

## AGE 8 - 11 YEARS (Boy or girl)

### CONTENTS - choose from:

Educational book and game, jigsaw, ball, card game, felt tip pens, pencils, pencil case, drawing book, hat, gloves, scarf, socks, wide toothed comb, soap, flannel, toothbrush and toothpaste, sports item, skipping rope, hair accessories.

## AGE 12 - 15 YEARS (Boy or girl)

### CONTENTS - choose from:

Educational book and game, playing cards, geometry set, pens, pencils and case, pencil sharpener, rubber, writing/drawing book, hat, gloves, scarf, socks, wide toothed comb, soap, flannel, toothbrush and toothpaste, washbag, hair accessories, sports item.

## THINGS TO PUT IN YOUR SHOEBOX

- International Customs require items which must be for education, health and hygiene purposes
- All items must be new or in 'as new' condition

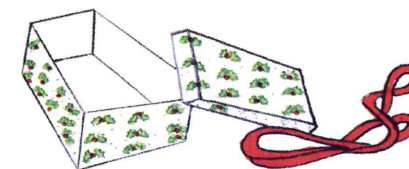
## DO NOT INCLUDE

- Battery powered items
- War related items, guns, knives
- Large items of clothing or shoes
- Books of a religious, racial or political nature
- Food of any kind
- Liquids of any kind
- Sweets of any kind
- Medicines
- Large toys
- Sharp items

**THANK YOU FOR YOUR HELP**

# HOW TO MAKE UP YOUR SHOEBOX

Please cover your box with wrapping paper, ensuring the lid is separately wrapped for customs' purposes.



Do not wrap individual items - just place them in your box.

Use an elastic band to secure the box.

Include a Christmas card and maybe a letter or photo if you wish.

Stick the reverse side of this panel to the top of your box, ensuring that you have clearly marked the age group and whether it is intended for a boy or girl.

Please sellotape to the top of the box a donation of £1 towards transportation and administration costs.

Any surplus will be used for the benefit of disadvantaged children worldwide.

**WE CANNOT ACCEPT BOXES WHICH ARE LARGER THAN:**

**33 x 20 x 15 centimetres  
13 x 8 x 6 inches**



# Djembe Workshop

**Monday 31<sup>st</sup> October**

**Monday Lunchtimes 1.25pm**

**Ex3**

**£6.50**

**Only 15 places available – letters available from your music teacher!  
Students who have drum lessons in school attend for free!**







Dear Parent/Guardian,

We are delighted to announce that from January 2017 Highcliffe School will be working with Artisan Theatre School providing professional training in drama dance and singing, this is a great opportunity to boost your child's self-esteem, confidence and skills within the performing arts.

All pupils are encouraged to attend and take advantage of these classes, run by teachers that have both worked and trained professionally within the industry.

Not only will this be beneficial for children who would like to expand their performing arts development, but also for those who are looking for a fun, energetic and motivating class to complement their academic studies.

Artisan Theatre School will be providing classes after school every Friday of term time, offering Musical Theatre, Drama, Singing and Dance. We anticipate this being an extremely popular class, for those who would like to reserve a space (places will be given on a first come first serve basis) as numbers will be limited, please return the attached booking form.

**ALL BOOKING FORMS MUST BE RETURNED TO THE SCHOOL OFFICE NO LATER THAN FRIDAY 9<sup>TH</sup> DECEMBER.**

**Advanced 1 Ages 11-14 years 4.30-6pm - £9 per class paid monthly or termly**

**Advanced 2 Ages 15-18 years 6-7.30pm - £9 per class paid monthly or termly**

More information can be found at: [www.artisantheatreschool.com](http://www.artisantheatreschool.com)

Facebook: /artisantheatreschool

Email: [office@artisantheatreschool.com](mailto:office@artisantheatreschool.com)/ Tel: 07752061382

Many Thanks

The Artisan Team

## Submission to Artisan Theatre School Lessons Enrolment Form



<b>Pupils Full Name</b>	
<b>D.O.B/Age</b>	
<b>Please list any performing arts experience your child has already had.</b>	
<b>Please circle</b> the class you would like to enrol your son/daughter for:  <b>Triple Threat £9</b> (Musical Theatre 1hr.30mins class) Act, Dance, Sing!  <b>Just Drama £5</b> (45 min class)  <b>Just Dance &amp; Singing £5</b> (45 min class)	
<b>Name of Parent/Guardian</b>	
<b>Address</b>	
<b>Contact Telephone No.</b>	
<b>Email</b>	

# Submission to Artisan Theatre School Lessons Enrolment Form






# **WILDLIFE of the NEW FOREST**

**HD Big Screen Presentation with Music**

**by**

**Brian Pettit**

Following a later break than usual a  
short presentation on the new-look Website

**Tuesday 1<sup>st</sup> November**  
**@ 7.30.p.m.**

Christchurch Junior School,  
Clarendon Road, Christchurch

All are very welcome  
Members: £ 2.00. Visitors: £ 5.00.

Parking available on site  
Tea & Coffee in the break  
No stiletto please by request

[www.historychristchurch.org.uk](http://www.historychristchurch.org.uk)



# Parents Online Safety Newsletter



Like us on Facebook



@DorsetSSCT

Search for Dorset SSCT

Welcome to the latest edition of the Parents Online Safety Newsletter.

## Help for parents: Internet Matters



InternetMatters.org are a not-for-profit organisation that has a simple purpose – to help keep children safe in the digital world. They are backed by some prominent internet industry players, e.g. BT, Sky, TalkTalk and Virgin Media, and supported by leading child online safety experts. It is a site aimed at parents looking to help them make the right decisions for themselves and their families.

The website is split into sections covering issues, advice and controls and the approach is to help parents to have relevant conversations with their children in order to:

- Encourage them to behave safely online
- Help them identify potential risks
- Help limit the risks they may face online
- Know what to do and where to go if they need help.

They have some useful videos and checklists and plenty of links to other useful sources of information.

The material is appropriate for parents of pre-school children through to teenagers and includes how to research issues, have conversations with children and set up devices.

## NSPCC Helplines

The NSPCC have a dedicated helpline for parents who are concerned about online safety issues.



In addition, if you are concerned about radicalisation or extremism you can call the NSPCC's general helpline.



## Report inappropriate content to ParentPort

ParentPort is run by the UK's media regulators. They set and enforce standards across the media to protect children from inappropriate material including programmes on TV or online, films, adverts, video games or magazines. At the ParentPort website you can find out about the standards set for the media, make a complaint or share your views.



<http://www.parentport.org.uk/>

## Top tips for being a good online role model

Children will model what they see family and friends doing: this applies just as much online as elsewhere in life. It is important that parents and carers show

This newsletter may be distributed electronically and on paper

See more at <https://www.dorset.police.uk/neighbourhood-policing/safe-schools-team/>

## SSCT Parents Online Safety Newsletter Autumn 2016

children and young people how to behave safely and responsibly.

- Limit the time that you spend online: make sure there is some family time where you are not all plugged in
- Be careful what you post: for example many parents post pictures of their children in school uniform – this is putting your children at risk
- If your child can see your social media postings, are you sure everything you and your contacts are writing is suitable for your child – sometimes there are better ways to monitor.

For more tips go to

<https://www.internetmatters.org/hub/expert-opinion/5-keys-to-parenting-in-the-digital-world/>

### What is Pokémon Go?

Pokémon Go was released in the UK just before the summer holidays and has been phenomenally popular. It uses 'augmented reality' where the camera on a smartphone is used to show the landscape layered onto mapping software so it looks like Pokémon creatures are in the environment. Pokémon are creatures that can be captured by Pokémon Trainers using a small spherical device called a Poké Ball. There are different types of Pokémon, with different moves, abilities and stats. The aim of the game is to capture as many Pokémon and to win as many 'gyms' for your team as you can and become a Pokémon Master. The Pokédex is an electronic device which stores data from Pokémon once they're captured. One of the other goals of the player is to attempt to fill their Pokédex by capturing all of the different types of Pokémon. Furthermore there are Poké Gyms, which are buildings located throughout the world where Pokémon Trainers can train, and Poké Stops where you can collect Poké Balls and other items. These are usually located in places of interest, like parks, art installations, churches and other public buildings. This can encourage congregation of people at these places.

This is undoubtedly a novel way to play games as the player has to walk around outside rather than sit at their console but there have been concerns over safety. As a parent or carer you need to consider the following.

It is likely that your child will meet other people while playing the game. It is essential that they understand who it is safe to interact with: this will depend to some extent on the age and maturity of your child.

Players may be so involved in the game they may forget about their 'real life' surroundings. While walking with one of my children in town over the summer I noticed two teenagers playing Pokémon Go on their bikes and one crashed into the other as he was trying to catch something exciting. Other issues such as walking out into traffic without looking or going into areas that may not be suitable are also concerns.

The game does contain in-app purchases so make sure these are passworded so your child does not run up a large bill. In addition, the game will use quite a lot of battery and data from the 3G/4G signal so ensure that you child understands the limits of this.

One of the best ways to keep children safe playing this game is to go with them – I certainly went down some streets I had never seen before and learnt some history of my town playing the game with my children and we did it on a shopping day to break the day up. For older children and young people who will not want your company, you still need to have conversations with them before they go: find out what routes they will be using, agree when they will be back and it is better if they go with friends rather than on their own.



There are also some parental controls available to limit game play time.

For more information see

<https://www.nspcc.org.uk/preventing-abuse/keeping-children-safe/online-safety/pokemon-go-parents-guide/>

This newsletter may be distributed electronically and on paper

See more at <https://www.dorset.police.uk/neighbourhood-policing/safe-schools-team/>